

Roller-Coater Glue Spreader

Installation & Operation Manual



Roller-Coater Glue Spreader

Installation & Operation Manual



Quick Machinery Company, LLC

23905 Clinton Keith 114-243

Wildomar, CA 92595

phone: (951) 691-6086

fax: (866) 399-1308

e-mail: service@quickmachinerycompany.com

web: <http://www.quickmachinerycompany.com>

Contents

Introduction.....	9
Installation	11
Operation.....	13
Components & Controls	13
Operation	13
Maintenance	15
Daily	15
Weekly.....	15
Electrical Diagram	17
Parts	19

Introduction

Thank you for your purchase of a Quick Roller-Coater Glue Spreader. Your machine has been designed for many years of trouble-free performance. Please read this installation & operation manual and follow its instructions to correctly install, operate and maintain your Glue Spreader. Doing so will help ensure optimum productivity and reliability of your machine.



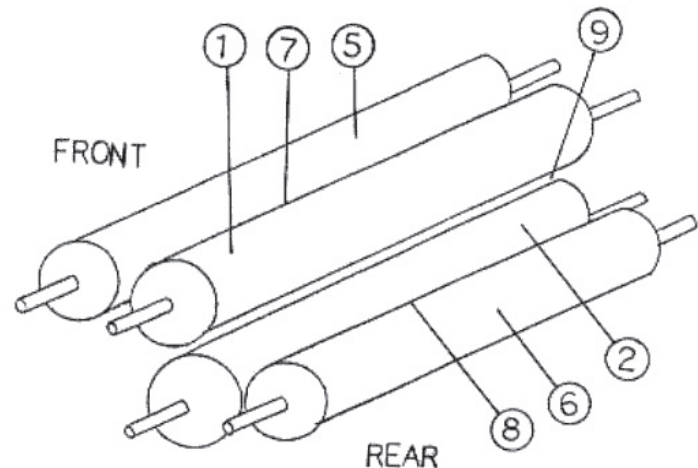
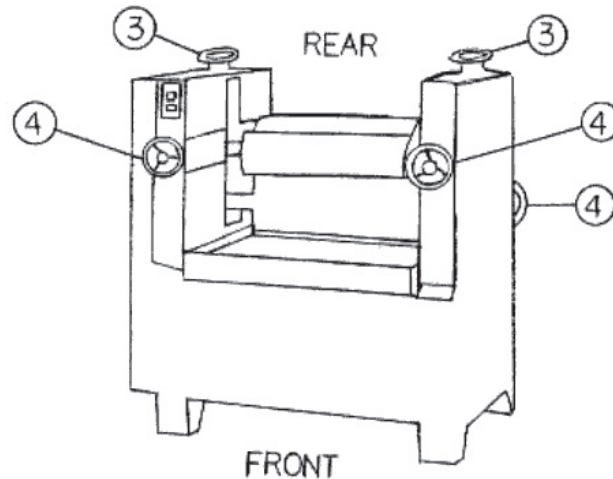
Installation

1. Remove the wooden shipping pallet from underneath the machine.
2. Place the machine on a flat concrete floor. Adjust the levelers on the Glue Spreader feet such that all of the feet touch the floor and the Applicator rolls are as level as possible.
3. Attach the proper-voltage (same as the Glue Spreader motor) 3-phase power source to the Glue Applicator's power connection box. Be sure to connect a proper ground connection to minimize the risk of electrical shock. Make sure to check that the motor turns in the proper direction. If not, reverse two of the three 3-phase power source leads.

Operation

Components & Controls

- (1) Upper coating roll
- (2) Lower coating roll
- (3) Stock thickness gap adjusters
- (4) Glue spread thickness adjusters
- (5) Upper doctor roll
- (6) Lower doctor roll
- (7) Upper trough for glue
- (8) Lower trough for glue
- (9) Gap for stock feed-through



Operation

1. Adjust the gap between the two coating rolls (1 & 2) to accommodate the stock to be glued, with the stock thickness gap adjusters (3).
2. Adjust the glue spread thicknesses with the glue spread thickness adjusters (4), which control the distances between the coating rolls and the doctor rolls. (For one-sided gluing, leave a big gap between the two lower rolls.)
3. Fill the upper trough (7) and/or the lower trough (8) with glue. (For one-sided glue application, fill only the upper trough.)
4. Turn on the electrical switch to start the rolls turning.
5. After the rolls are all well-coated, feed the stock through the gap (9).
6. In case of emergency during glue spreading or while advancing the rolls for cleaning, push one of the two emergency stop bars to stop the machine.

Maintenance

Daily

Remove excess glue from the machine:

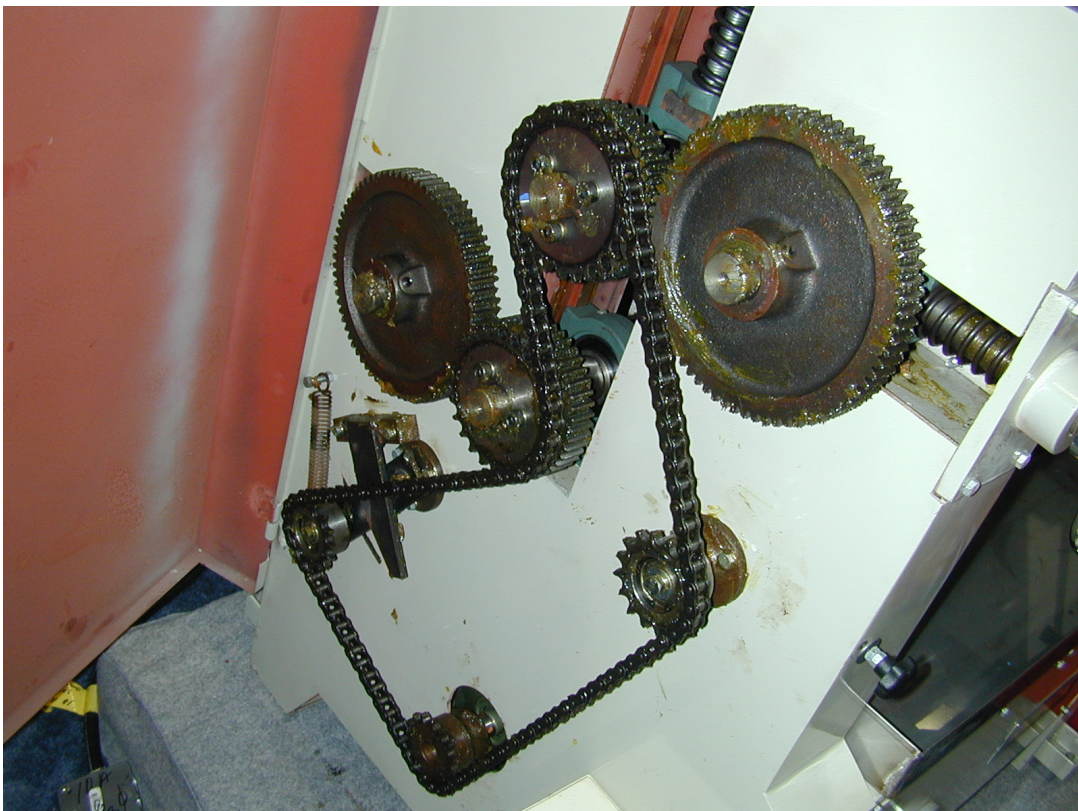
1. Turn off the electrical switch to stop the machine.
2. Lift the copper end plates out from both ends of each set of rolls.
3. Adjust the glue spread thickness adjusters (4) to create a large gap between the coating rolls and doctor rolls. Let the excess glue drip down into the aluminum drip pan.

Clean the machine:

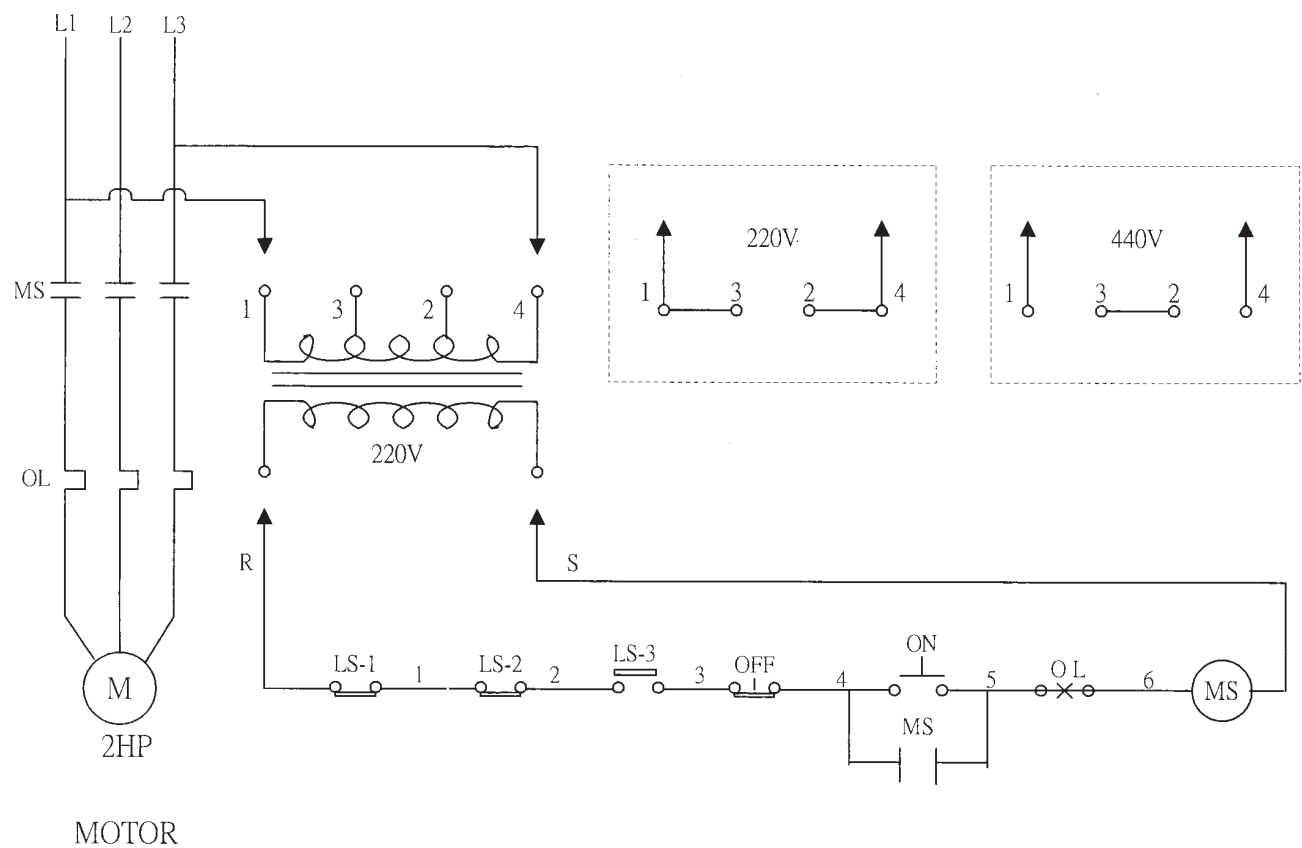
1. Clean the rollers, doctor rollers, and the copper end plates with a long-handled brush and hot water. When cleaning the rollers and doctor rollers, make sure the machine is turned OFF. After cleaning one side of the rollers, turn on the machine briefly to advance the rollers, turn OFF the machine, and clean the other side of the rollers.

Weekly

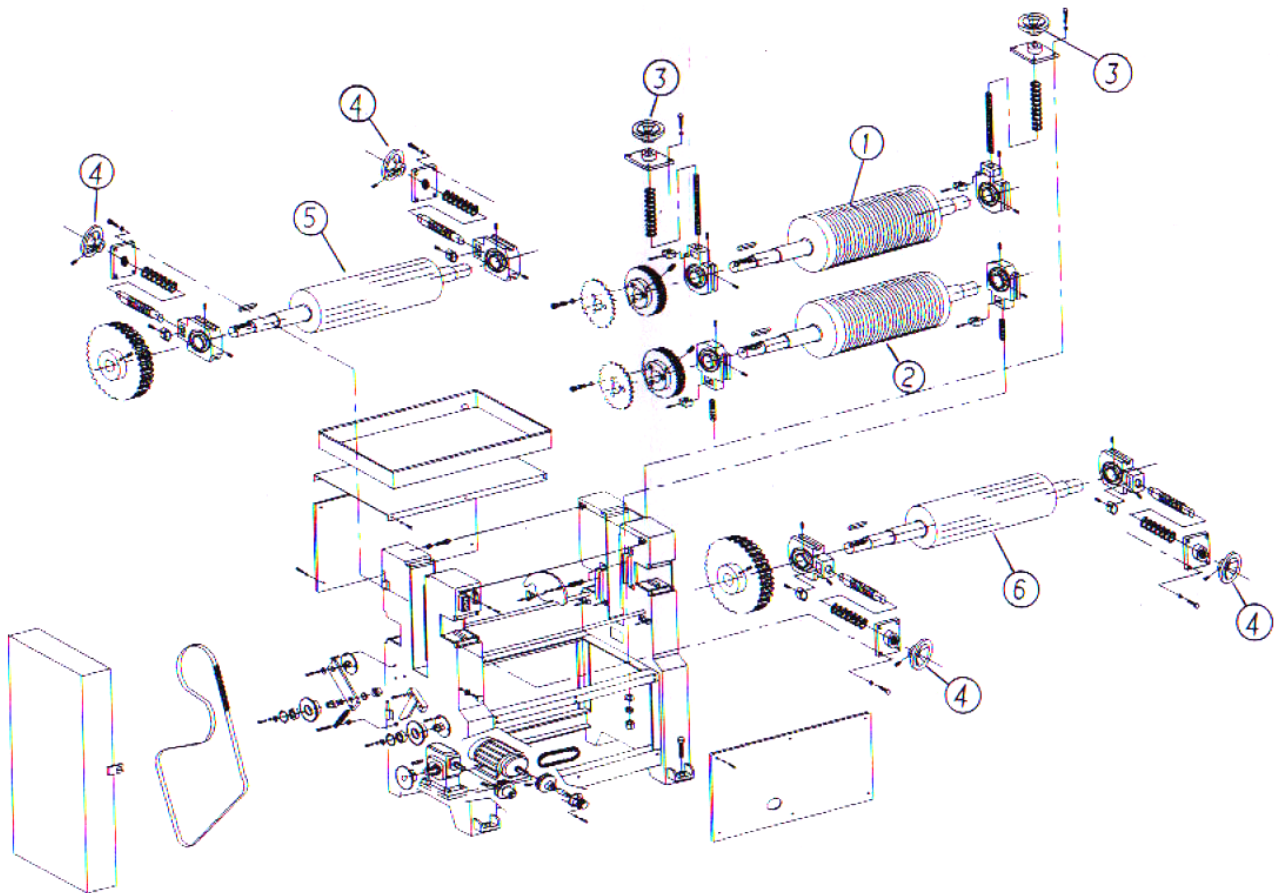
1. Lubricate the drive chain and drive gears with oil or grease.
2. While lubricating the chain and gears, check for loose bolts; tighten if needed.



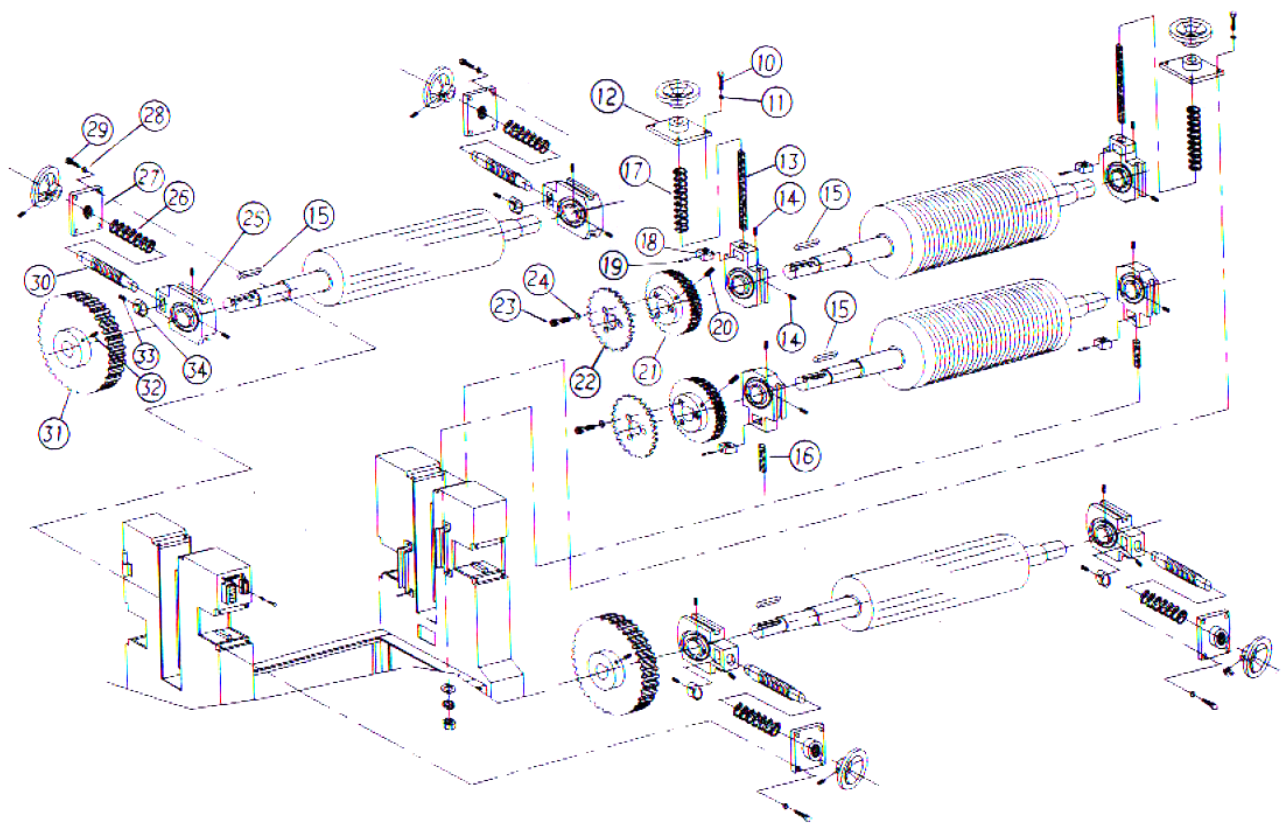
Electrical Diagram



Parts



Parts



Parts

